



Aussie Pumps

Reliable Products ... Reliable People

AUSSIE GMP PUMPS BARE SHAFT SEMI TRASH ... 3 YEAR PUMP WARRANTY

Aussie GMP bare shaft self priming centrifugal semi trash pumps are designed for long coupling to electric motors, petrol or diesel engines, hydraulic or PTO drives.

Available in 1½", 2", 3", 4", 6" and 8" configurations they are designed for high and low pressure operations.

Pumps feature big open impellers, non clog design, silicon carbide mechanical seal, stainless

steel wear plate and large front opening port to permit cleaning without pipe work disconnection.

Flows available to 9,200 litres per minute and heads to 54 metres.

These cast iron, heavy duty pumps are suitable for a wide range of industrial and agricultural applications.



Features

- Heavy duty cast construction
- Open non clog style impeller
- Self primes from 6 metres
- Front mounted clean out port
- Cast iron foot mounting
- Silicon carbide mechanical seal standard, option of Viton or tungsten carbide
- Stainless steel wear plate
- All pumps pedestal mounted
- Drive shafts available in high grade steel or stainless steel configurations

Benefits

- Long trouble free life
- Pumps solids in suspension
- Ready to pump in minimum amount of time
- Pump clean out without dismantling pipe work
- Stable, easy to install
- Flexibility of handled liquids
- Protects pump from wear, cuts operating costs
- Makes installation simple
- Applied of specific applications

Applications:

- Industrial waste pump out
- Livestock effluent pump out
- Public sewage works
- Abattoir waste pump out
- Piggeries, chicken processing, feed lots
- Wash bay water recirculation
- Batch plant recirculation
- Mineral processing
- Quarry dewatering

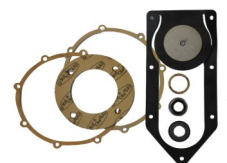


Specifications

Suct/Del	Model	Stock Code	CAT number	Required KW	RPM	PSI	Total Head (m)	Capacity (l/m)	Solid size (mm)
2" x 2"	B2KQ-A/ST	GB2KQ-A/ST"W"	AS79	1.5	2900	25	18	440	19
3" x 3"	B3KQ-A/ST	GB3KQ-A/ST "W"	AS67	2.2	2900	22	16	900	27
3" x 3"	B3XR-A/ST	GB3XR-A/ST N/P	AS91	7.5	2900	43	31	1500	24
3" x 3"	G3TMK-A/ST	G3TMK-A/ST"W"NP	ASA8	11	2900	75	54	1100	16
4" x 4"	B4KQ-A/ST	GB4KQA/ST NOPUL	AS71	4	2900	20	14	1600	37
4" x 4"	B4XR-A/ST	GB4XR-A/ST W/O	ASB8	15	2900	42	30	2200	39
6" x 6"	B6XR-A* (see page 4)	GB6XR-A/W	ASBR	22	2000	34	24	4500	55
8" x 8"	B8XR-A* (see page 5)	GB8XR-A/W	ASDV	65	1800	42	30	9200	70

* Cast 316 stainless steel impeller options available.

Rejuvenation kits...
Contain gaskets, mech seal, counterface & complete check valve to make servicing these pumps a breeze.



Due to our program of continuous product development the manufacturer reserves the right to alter specifications without notice.

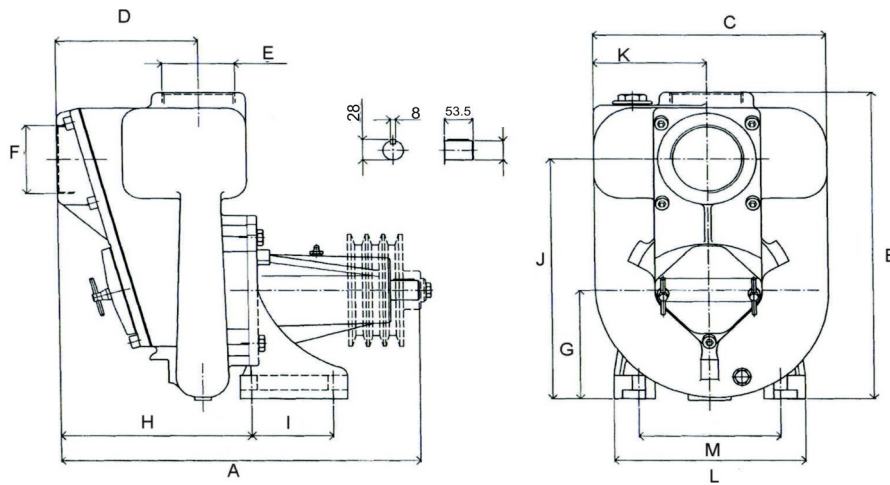


Aussie Pumps

Reliable Products ... Reliable People

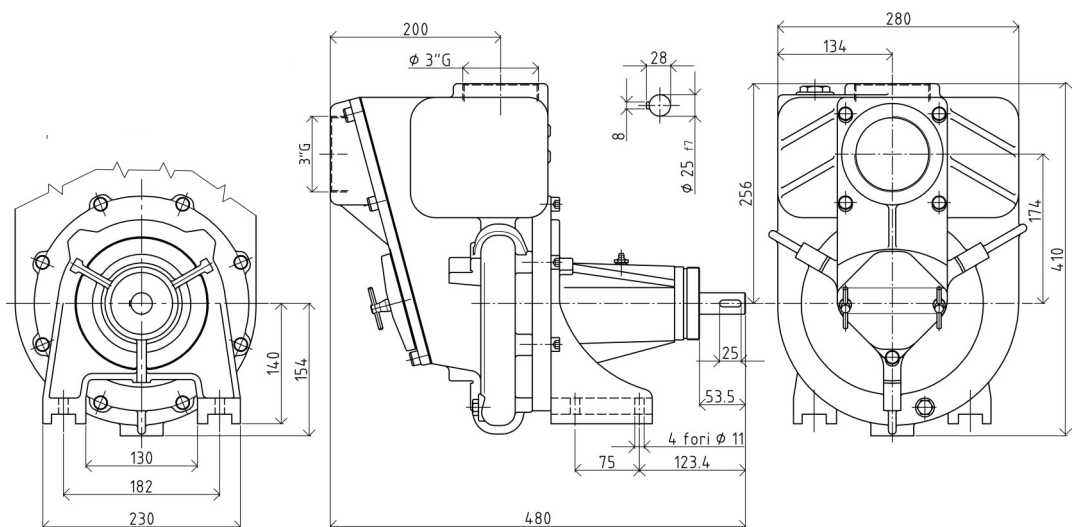
AUSSIE GMP PUMPS BARE SHAFT SEMI TRASH ... 3 YEAR PUMP WARRANTY

Dimensions:



Model	A (mm)	B (mm)	C (mm)	D (mm)	E	F	G (mm)	H (mm)	I (mm)	J (mm)	K (mm)	L (mm)	M (mm)	Shaft size
B2KQ-A/ST	266	295	184	120	2"	2"	106	180	-	231	87	170	132	16mm
B3KQ-A/ST	300	294	185	147	3"	3"	106	215	-	227	87	170	132	16mm
B3XR-A/ST	435	400	280	175	3"	3"	140	258	75	315	136	235	182	25mm
B4KQ-A/ST	489.1	405	315	195	4"	4"	140	265	105	285	140	230	170	25mm
B4XR-A/ST	505	450	365	196	4"	4"	154	281	75	311	181	230	182	25mm

G3TMK-A ST



Due to our program of continuous product development the manufacturer reserves the right to alter specifications without notice.

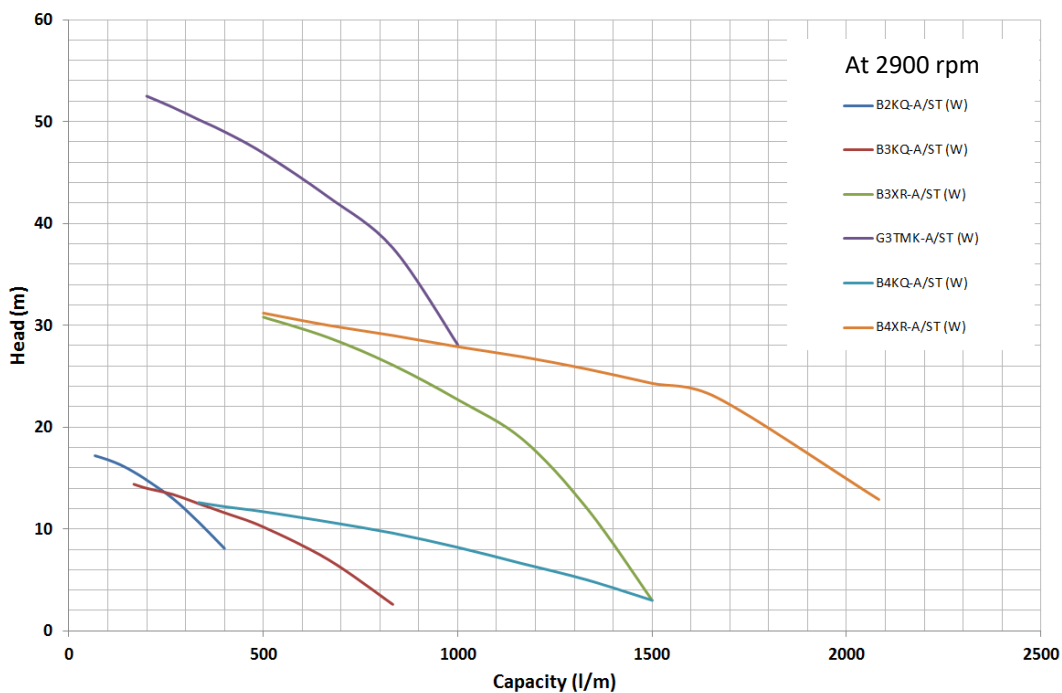


Aussie Pumps

Reliable Products ... Reliable People

AUSSIE GMP PUMPS BARE SHAFT SEMI TRASH ... 3 YEAR PUMP WARRANTY

Performance Curve:



Golden Rule
Operate pump at the best efficiency point ... 85% of max pump head

Curves should be used as a guide only. Detailed curves available on request.

Optional Accessories:

- Heavy duty galvanised roll frame (standard on diesel drive)
- Heavy duty suction hoses 2" and 3"
- Medium pressure lay flat delivery hose, working pressure 100 psi
- High flow diesel transfer fuel nozzle
- Carbon ceramic, silicon carbide, tungsten carbide or Viton seals available
- Strainers and couplings

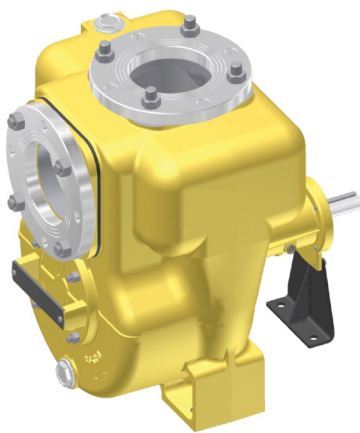
Due to our program of continuous product development the manufacturer reserves the right to alter specifications without notice.



Aussie Pumps

Reliable Products ... Reliable People

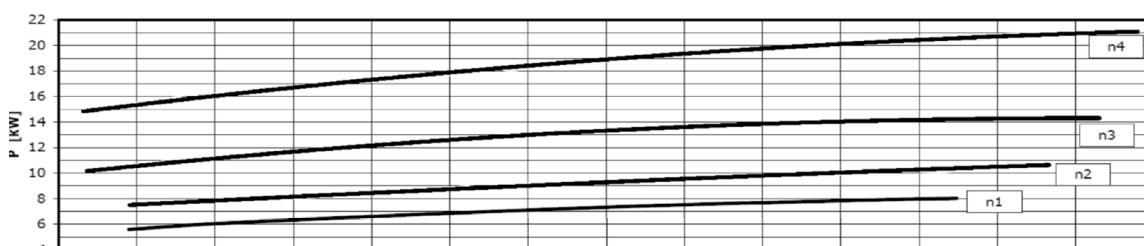
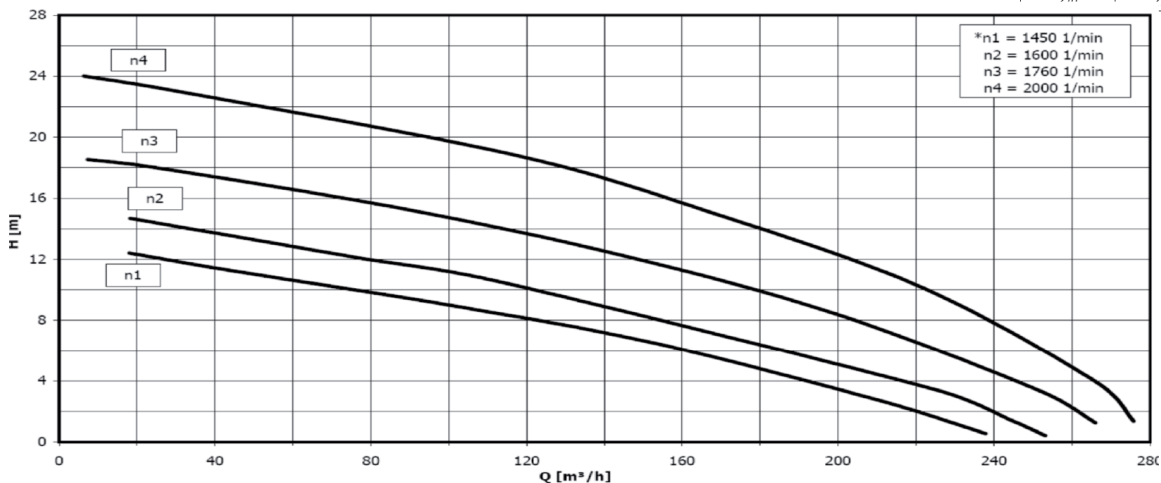
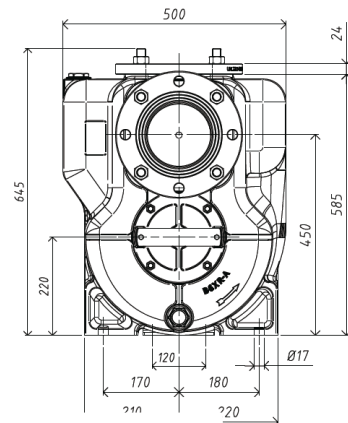
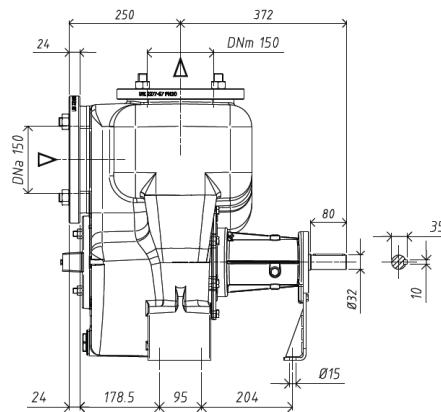
AUSSIE GMP PUMPS BARE SHAFT SEMI TRASH ... 3 YEAR PUMP WARRANTY



B6XR-A Semi trash pump

This big 6" semi trash pump is designed to pump water contaminated with sand, mud or particles in suspension.

- The frontal door aids quick inspection and, when necessary, easy access to the impeller and volute.
- Steel shaft, ss 316 where in contact with liquid.
- Also available with pulley



Due to our program of continuous product development the manufacturer reserves the right to alter specifications without notice.



Aussie Pumps

Reliable Products ... Reliable People

AUSSIE GMP PUMPS BARE SHAFT SEMI TRASH ... 3 YEAR PUMP WARRANTY

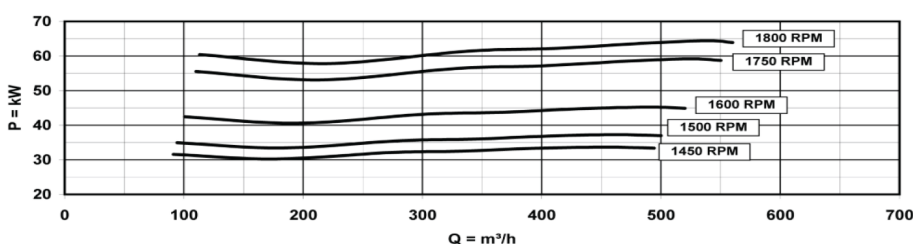
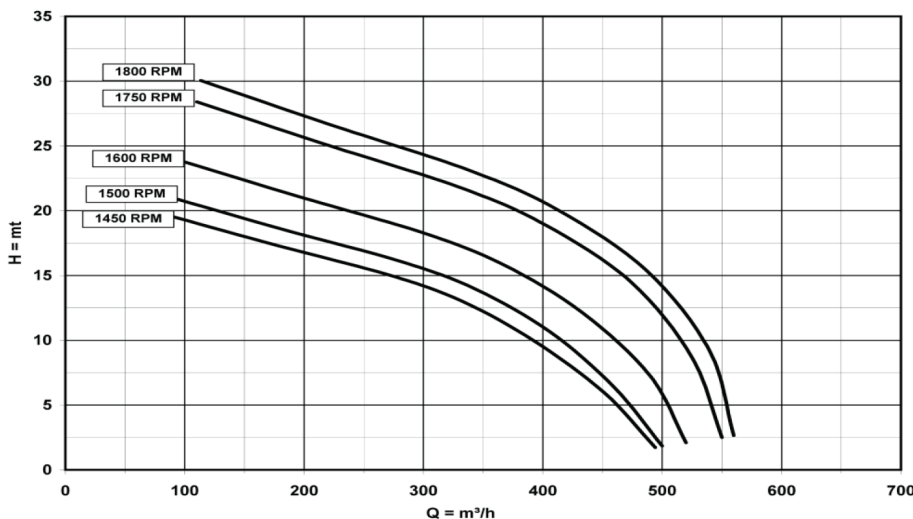
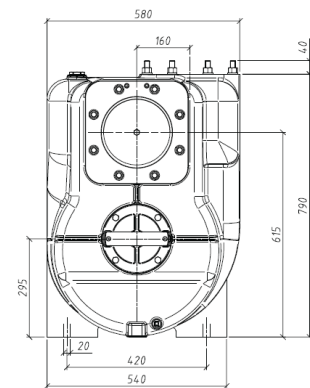
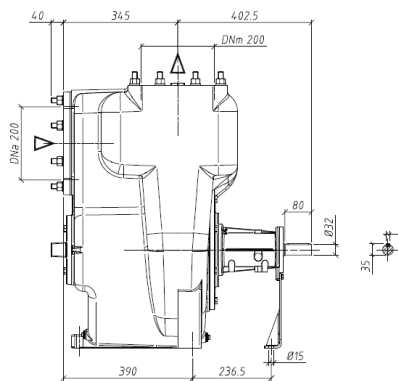


B8XR-A Semi trash pump

This big 8" semi trash pump is designed to pump water contaminated with sand, mud or particles in suspension.

- The frontal door aids quick inspection and, when necessary, easy access to the impeller and volute.
- Steel shaft, ss 316 where in contact with liquid.
- Also available with pulley

Peso
Weight
Poids
265 Kg



Due to our program of continuous product development the manufacturer reserves the right to alter specifications without notice.